



Market Indicators

TOP GAINER	%	TOP LOSER	%
INDUSINDBK	3.61	BPCL	(5.39)
HCLTECH	2.91	JPASSOCIAT	(4.41)
RELINFRA	2.35	ONGC	(3.86)
BHEL	2.27	HDFC	(3.06)
AMBUJACEM	1.55	TATAMOTORS	(2.84)

Broder Indices

Index	Closing Value	Change in (Pts)	Change (%)
MID CAP	5988.69	(3.30)	(0.06)
SMALL CAP	5670.28	(21.77)	(0.38)
IPO	1384.56	(5.99)	(0.43)

Sectoral Indices

AUTO	10655.27	(162.97)	(1.51)
BANKEX	12899.57	(138.57)	(1.06)
CD	6158.10	(1.54)	(0.03)
CG	9134.61	11.79	0.13
FMCG	6895.42	49.48	0.72
HC	9078.99	(4.11)	(0.05)
IT	6246.22	19.81	0.32
METAL	7543.14	(104.44)	(1.37)
OIL & GAS	8743.11	(172.85)	(1.94)
POWER	1614.38	(6.10)	(0.38)
PSU	5912.89	(114.47)	(1.90)
REALTY	1486.08	(27.14)	(1.79)
TECK	3698.72	16.00	0.43

Currency Movement

USDINR	0.01↓
EURINR	0.13↑
GBPINR	0.51↑
JPYINR	0.60↑

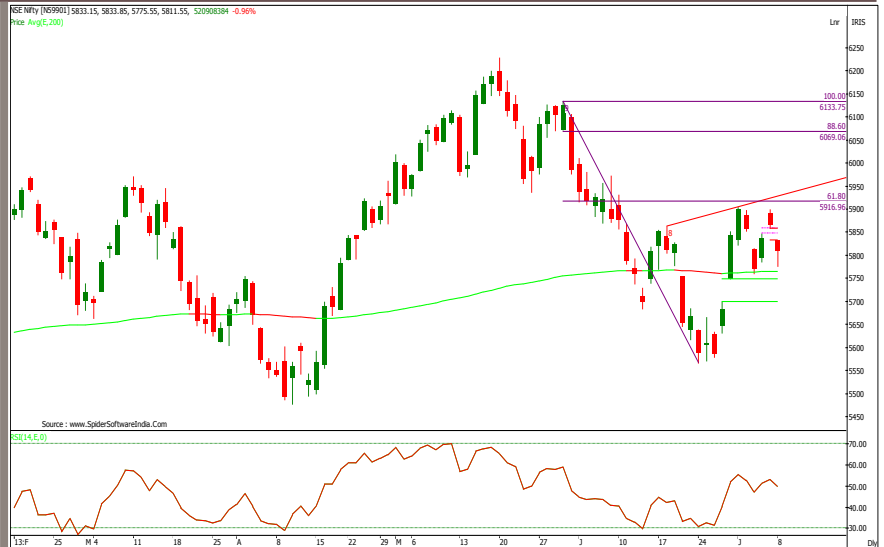
Market Breadth

Exchange	Advances	Declines	Unchanged
BSE	1016	1292	123
NSE	515	781	71

MARKET STATISTICS

ACTION	FII (₹) Cr.	DII (₹) Cr.
CASH BUY	2117.95	831.09
CASH SELL	2322.41	890.20
(Provisional)	(204.46)	(59.11)

FII Derivatives	Buy (Cr.)	(Sell Cr.)	Net (Cr.)
Index Futures	1393.16	1839.65	(446.49)
Index Options	12656.71	13522.07	(865.36)
Stock Futures	1638.35	1339.28	299.07
Stock Options	1040.96	1162.86	(121.90)
Total			(1134.68)



NIFTY OUTLOOK

- ◆ The price action on daily chart has formed small bodied bear candle with long lower shadow suggest supportive efforts near 200 days EMA (5765). And it carries 35 points bearish gap above the bead between 5833 - 5866, such gap area overlaps the last Friday's bullish gap formed in range of 5858-5836 and such actions resembles as Island Reversal pattern.
- ◆ AS mentioned in previous edition of report the index has support at near its 200 days EMA (5765), despite the high volatility in yesterday's trade the selling absorbed near 200 days EMA. The confluence of the rising gap area formed in last June 28, 2013 between 5749 - 5682 is seen as an important technical support. The confluence of 50% and 61.80% Fibonacci retracement of last week rally from low of 5566 to 5682 levels 5735 and 5695 respectively makes this crucial support for short term.
- ◆ On the higher side, strength and close above last week's high of 5904 will be required to signal an end of the current consolidation phase as it would also confirm a higher bottom in place at last week's low of 5760 and provide necessary impetus for bulls to move towards higher side targets of 5970-6090 in the near term.
- ◆ We expect the index to post a meaningful retracement to the May - June decline from 6229 to 5577 in the near term. Since September 2012, we have observed each major directional move in previous leg to April - May (5477 - 6229) from getting retraced by 88.60% (5562). And therefore, going by the historical tendency, the 80% retracement of the recent down leg from May 2013 high of 6229 to June low of 5566 projects potential upside towards 6100 odd levels in the near term.
- ◆ The near term outlook continues to remain positive. A decisive Daily Close above 5930 the current value of the "Neckline" of the potential Inverse Head & Shoulders pattern would confirm the "Inverse Head and Shoulder" pattern. The pattern target would be placed at 6244. Hence, a minimum test of the May 2013 high of 6229 is expected.

The Spot Nifty has support at 5792 ,5750 while resistance is at 5858, 5888

Indian Index Movement

MOVEMENT	SENSEX	NIFTY	SMA	SENSEX	NIFTY
OPEN	19418.98	5833.15	5 Days	19375	5829
HIGH	19422.69	5833.85	20 Days	19096	5761
LOW	19185.92	5775.55	60 Days	19455	5895
CLOSE	19324.77	5811.55	100 Days	19308	5843
CHANGE IN PTS	(171.05)	(56.35)	200 Days	19238	5833
CHANGE IN %	(0.88)	(0.96)	260 Days	18824	5706

*Source: BSE, NSE, BI, Capital Market & rbi.org.in



Symbol	PIVOT TABLE					Simple Moving Average		
	S2	S1	Pivot Point	R1	R2	5 Days	20 Days	55 Days
Sensex	19074	19200	19311	19436	19548	19375	19096	19531
Nifty	5749	5780	5807	5838	5865	5829	5761	5918
Bank Nifty Future	11115	11226	11315	11426	11515	11446	11550	12247
Nifty future	5744	5787	5815	5858	5887	5834	5762	5922
NIFTY COMPONENTS								
ACC	1203	1230	1245	1272	1287	1234	1208	1221
AMBUJACEM	184	188	191	196	199	189	183	184
ASIANPAINT	4598	4636	4667	4705	4736	4631	4559	4645
AXISBANK	1226	1239	1259	1272	1292	1278	1281	1398
BAJAJ-AUTO	1822	1843	1859	1879	1896	1879	1820	1812
BANKBARODA	534	544	551	561	568	559	586	637
BHARTIARTL	280	287	297	304	315	298	291	299
BHEL	171	177	180	186	190	180	175	188
BPCL	333	339	351	357	368	361	359	384
CAIRN	288	292	295	299	303	293	289	293
CIPLA	391	394	398	401	406	397	386	394
COALINDIA	278	284	290	296	302	297	299	308
DLF	168	172	175	178	181	178	180	209
DRREDDY	2182	2216	2242	2275	2301	2237	2170	2098
GAIL	309	313	320	324	331	328	306	322
GRASIM	2754	2778	2797	2821	2840	2801	2783	2889
HCLTECH	791	805	813	827	836	790	773	752
HDFC	801	812	830	841	858	851	839	863
HDFCBANK	646	653	660	668	675	658	653	675
HEROMOTOCO	1628	1641	1651	1664	1674	1659	1635	1655
HINDALCO	95	98	99	102	104	100	99	102
HINDUNILVR	593	602	607	615	621	599	593	579
ICICIBANK	1012	1020	1029	1038	1047	1057	1063	1116
IDFC	124	125	127	128	130	127	134	147
INDUSINDBK	458	475	485	502	512	477	473	488
INFY	2441	2454	2474	2488	2508	2440	2428	2376
ITC	335	341	345	351	355	336	328	326
JINDALSTEL	213	218	221	225	228	219	222	275
JPASSOCIAT	50	51	52	53	54	53	57	67
KOTAKBANK	674	683	692	701	710	702	725	740
LT	1375	1389	1401	1415	1427	1407	1404	1470
LUPIN	811	819	833	842	855	829	791	760
M&M	927	937	951	961	974	972	957	959
MARUTI	1515	1533	1548	1566	1581	1561	1537	1610
NMDC	100	101	102	104	105	102	105	116
NTPC	136	138	141	143	146	144	145	151
ONGC	294	299	307	312	321	312	312	321
PNB	603	612	618	627	633	629	674	721
POWERGRID	103	104	106	107	109	108	108	111
RANBAXY	331	337	341	347	352	341	345	397
RELIANCE	851	859	866	874	881	866	828	816
RELINFRA	340	354	363	377	386	359	349	375
SBIN	1837	1855	1868	1887	1900	1911	1970	2118
SESAGOA	138	139	141	143	145	144	142	153
SUNPHARMA	1016	1029	1040	1053	1064	1027	982	984
TATAMOTORS	279	284	287	291	294	289	288	295
TATAPOWER	84	84	85	86	87	85	83	89
TATASTEEL	255	258	260	263	265	268	273	295
TCS	1479	1493	1514	1528	1549	1513	1466	1466
ULTRACEMCO	1798	1843	1894	1939	1990	1911	1861	1908

URJA INVESTMENT PTE. LTD.

Private & Confidential



Economic Calendar

Impact	IST	Location	Indicator	Forecast	Previous	Actual
Low	0:30	USA	Consumer Credit (M o M)	13.2B	11.1B	
Medium	4:31	Britain	BRC Retail Sales Monitor (Y o Y)		1.80%	
Low	4:31	Britain	RICS House Price Balance	10%	5%	
Low	5:20	Japan	M2 Money Stock (Y o Y)	3.40%	3.40%	
High	7:00	China	CPI (Y o Y)	2.50%	2.10%	
Medium	7:00	China	PPI (Y o Y)	-2.50%	-2.90%	
Low	11:30	Japan	Prelim Machine Tool Orders (Y o Y)		-7.40%	
Low	12:15	Euro Zone	French Gov Budget Balance		-66.8B	
High	14:00	Britain	Manufacturing Production (M o M)	0.50%	-0.20%	
Medium	14:00	Britain	Trade Balance	-8.4B	-8.2B	
Low	14:00	Britain	Industrial Production (M o M)	0.30%	0.10%	
Medium	All Day	Euro Zone	ECOFIN Meetings			
Low	17:00	USA	NFIB Small Business Index	96.2	94.4	
Medium	19:30	Britain	NIESR GDP Estimate		0.60%	



DISCLAIMER: This document is not for public distribution and has been furnished to you solely for your information and must not be reproduced or redistributed to any other person. Persons into whose possession this document may come are required to observe these restrictions.

The information and views in this report, our website & all the service we provide are believed to be reliable, but we do not accept any responsibility (or liability) for errors of fact or opinion. Users have the right to choose the products that suits them the most. Investment in Stocks has its own risks. Sincere efforts have been made to present the right investment perspective. The information contained herein is based on analysis and up on sources that we consider reliable. We, however, do not vouch for the accuracy or the completeness thereof. This material is for personal information and we are not responsible for any loss Incurred based upon it & take no responsibility whatsoever for any financial profits or loss which may arise from the recommendations above.

Recipients of this material should rely on their own investigations and take their own professional advice. Each recipient of this document should make such investigations as it deems necessary to arrive at an independent evaluation of an investment in the securities of companies referred to in this document including the merits and risks involved), and should consult their own advisors to determine the merits and risks of such an investment. Price and value of the investments referred to in this material may go up or down. Past performance is not a guide for future performance. Certain transactions - futures, options and other derivatives as well as non-investment grade securities - involve substantial risks and are not suitable for all investors. Reports based on technical analysis centers on studying charts of a stock's price movement and trading volume, as opposed to focusing on a company's fundamentals and as such, may not match with a report on a company's fundamentals.

All the Rights are reserved.

Contact Us: research@urjatrade.com

Web: www.LAAVLE.com

Registration: NSE - CASH INB230696132 | NSE - FO INF230696132 | BSE - CASH INB010696137

URJA INVESTMENT PTE. LTD.

Private & Confidential